

# FOR LEASE

## ENTERPRISE & SEAPORT BLVD ~ WEST SACRAMENTO, CA



### PROJECT FEATURES:

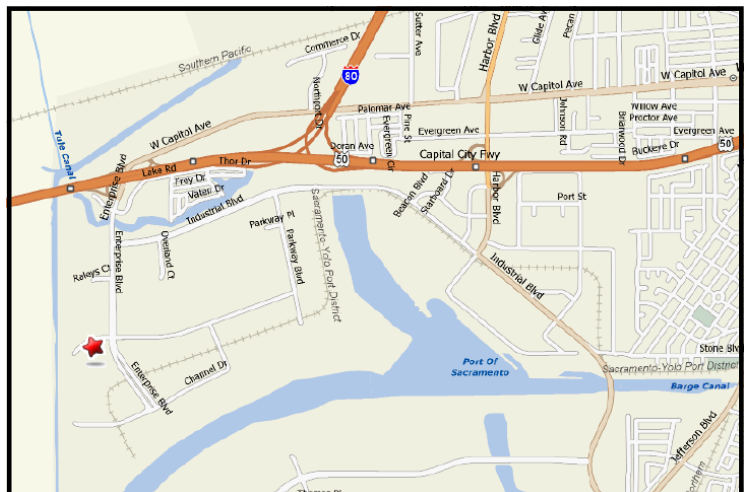
- 16' - 20' CLEAR HEIGHT
- WAREHOUSE, FULLY INSULATED
- GRADE LEVEL LOADING
- POWER: 200 AMPS 120/208 VOLT
- INDIVIDUAL SIGNAGE
- AMPLE PARKING
- EASY ACCESS TO ALL FREEWAYS
- 5 MINUTES TO DOWNTOWN
- 20 MINUTES TO AIRPORT

ADDRESS	UNIT SQ.FT.	OFFICE SQ.FT.	ASKING RENT
1984 ENTERPRISE	1,800	200	\$.40/NNN
1986 ENTERPRISE	1,800	150	\$.40/NNN
1990 ENTERPRISE	1,800	700	\$.40/NNN
4005 SEAPORT	2,080	700	\$.40/NNN
4007 SEAPORT	2,080	980	\$.40/NNN

### EXCLUSIVE AGENTS

Tom MacLaughlin  
DRE Lic. No. 00690406  
**(916) 374-4233**  
[thmac@macco.org](mailto:thmac@macco.org)

Billy MacLaughlin  
DRE Lic. No. 01175040  
**(916) 374-4231**  
[billymac3@macco.org](mailto:billymac3@macco.org)



1401 Shore Street  
West Sacramento, CA 95691  
T 916.371.9021  
F 916.373.0655  
WWW.MACCO.ORG



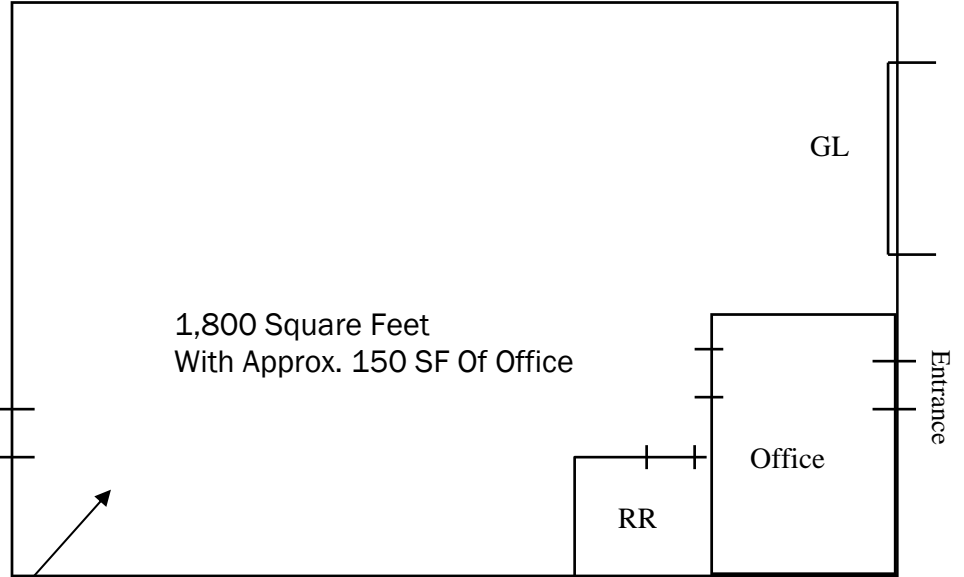
**macLaughlin and CO**

Commercial And Industrial Real Estate Since 1965

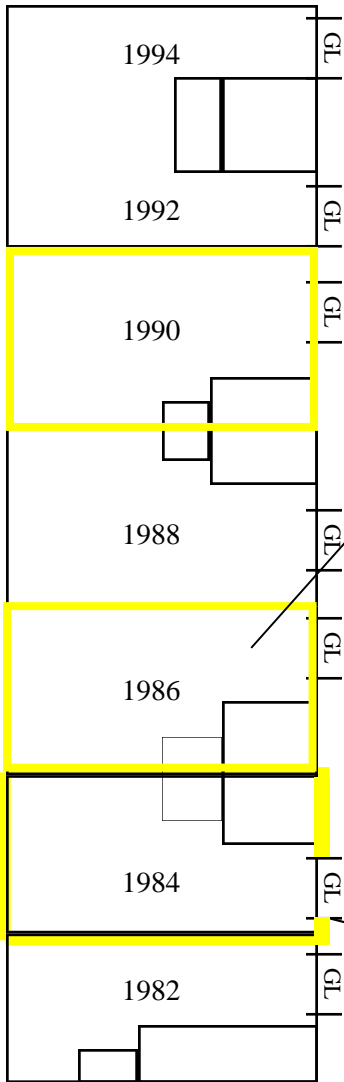
The information contained herein has been carefully checked and to the best of our knowledge is correct but we assume no liability for representations as to values or for errors or omissions in this statement. Client should carefully verify the above items of income and expenses and all other information contained herein.



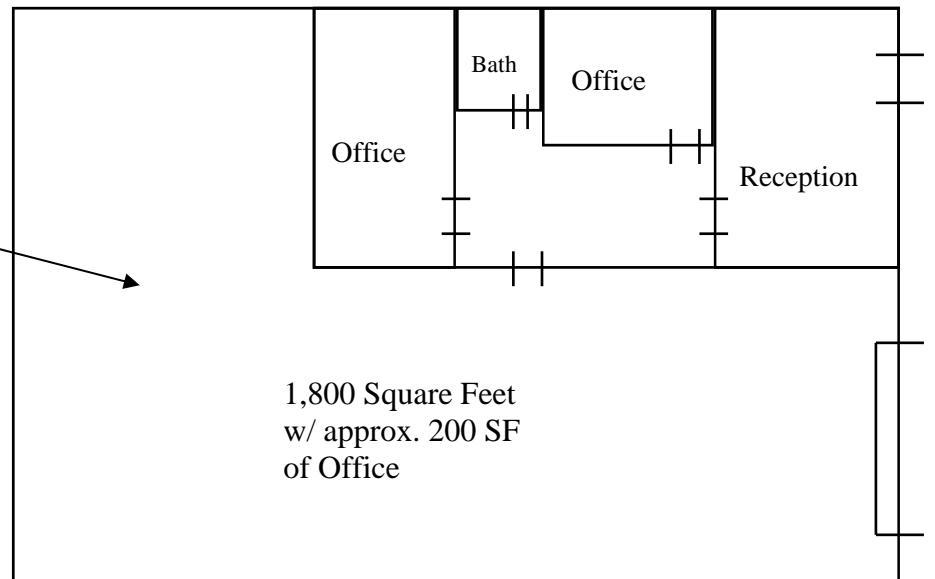
### 1986 Enterprise Blvd.—Floor Plans



### 1980-1994 Enterprise Building A



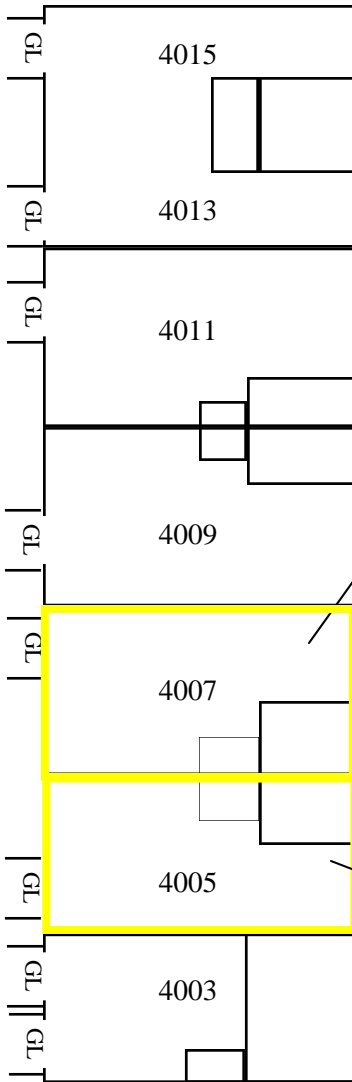
### 1984 Enterprise Blvd.—Floor Plans





4007 SEAPORT Blvd.—Floor Plans

**4003-4015 Seaport  
Building B**



4005 SEAPORT Blvd.—Floor Plans

