

AVAILABLE FOR LEASE

3350 WATT AVENUE, SUITE A

SACRAMENTO, CALIFORNIA

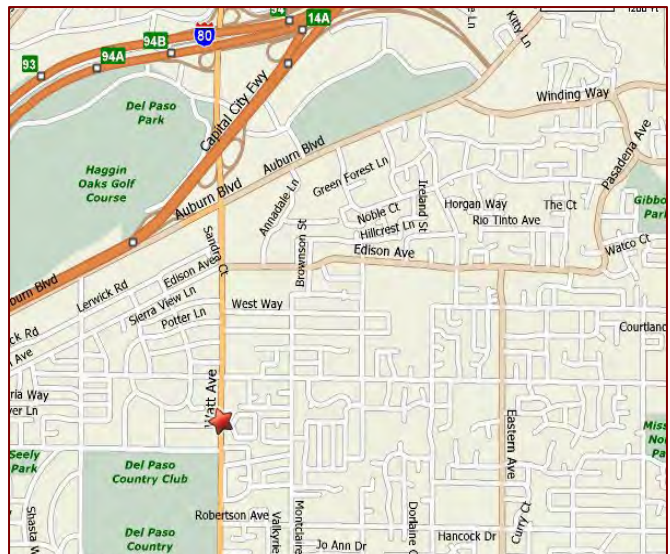


Office SF Available: +/-1,928 RSF

Asking Rent: \$.75/PSF/GROSS

Project Features:

- **Located On Second Floor**
- **Reception Area**
- **4 Private Offices**
- **Large Conference Room**
- **Work/Break Room**
- **Parking Ratio: 4.00/1,000 Sq. Ft.**
- **Centrally Located On Watt Avenue**



For Information Contact:

Debbie Regan
DRE Lic. No. 01703752

Billy MacLaughlin, III
DRE Lic. No. 01175040

1401 Shore St., W. Sacramento, CA 95691
Phone: 916.371.9021 Fax: 916.373.0655

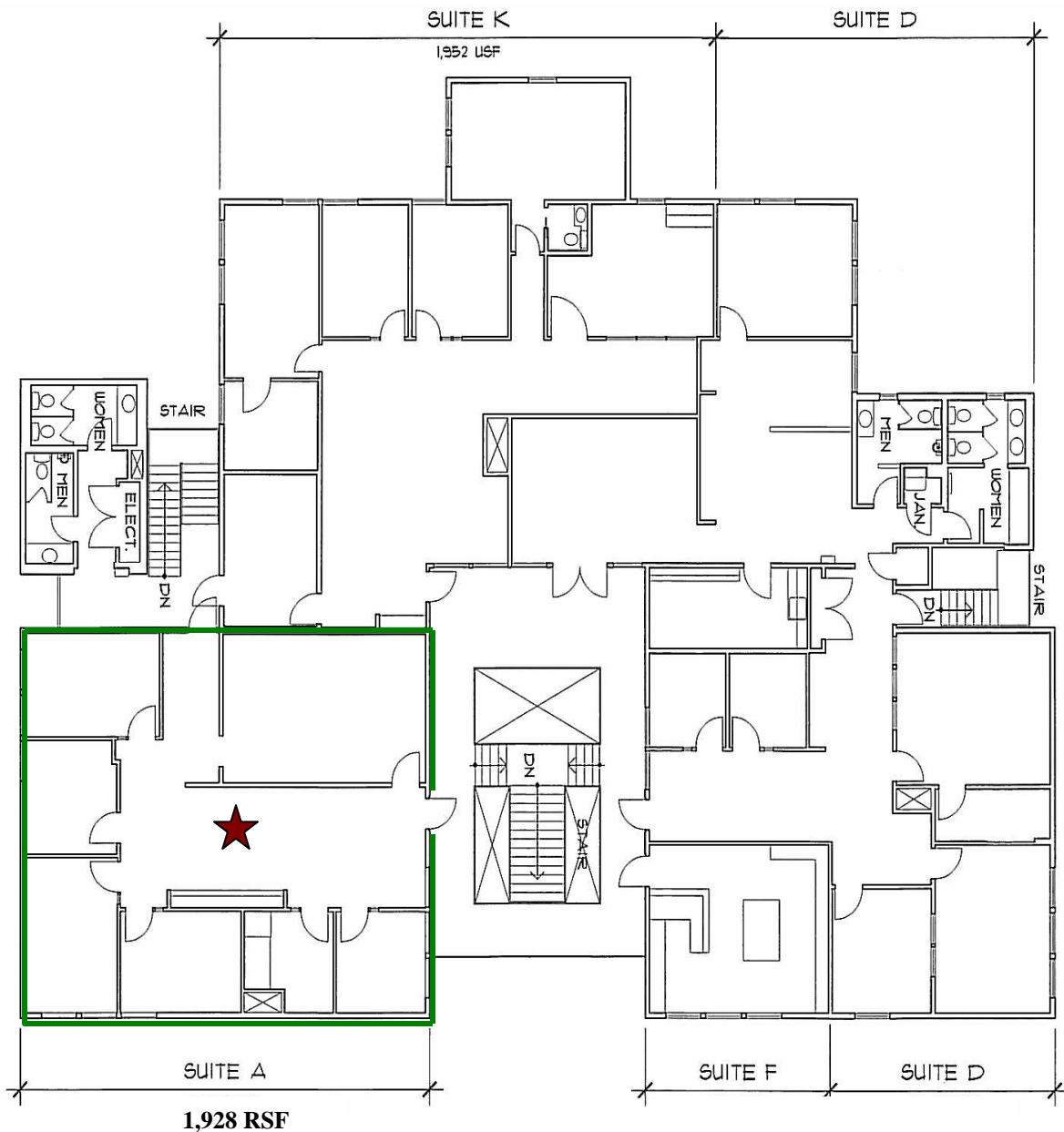


Commercial and Industrial Real Estate Since 1965

The information contained herein has been carefully checked and to the best of our knowledge is correct but we assume no liability for representations as to values or for errors or omissions in this statement. Client should carefully verify the above items before making any investment decisions.

AVAILABLE FOR LEASE

3350 WATT AVENUE, SUITE A SACRAMENTO, CALIFORNIA



*Available Suites: ★

*Not To Scale



macLaughlin and co

Commercial and Industrial Real Estate Since 1965