

# FOR LEASE

2795 Del Monte St. suites A & B, West Sacramento, CA



## PROJECT FEATURES

- 2 grade level doors
- Easy access to all highways
- 20 minutes from international airport
- Individual signage available
- Ample parking
- 200 amp, 120/208 volt power
- 16' clear height

**Sq. Ft. Available:** 4,400 sq.ft.  
**Office:** 1,950 sq. ft.  
**Divisible:** 2,400 or 2,000 sq. ft.

**Asking Rent:** **\$.40/I.G.**

## EXCLUSIVE AGENTS

### **Tom MacLaughlin**

DRE Lic. No. 00690406

**(916) 374-4233**

thmac@macco.org

### **Jim MacLaughlin**

DRE Lic. No. 00944675

**(916) 374-4232**

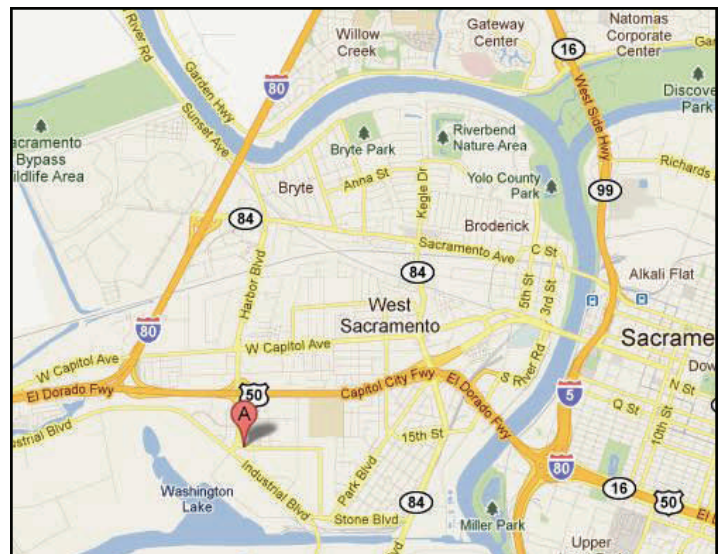
jmaclaughlin@macco.org

### **Bill MacLaughlin**

DRE Lic. No. 01175040

**(916) 374-4231**

billymac3@macco.org



**macLaughlin and co**

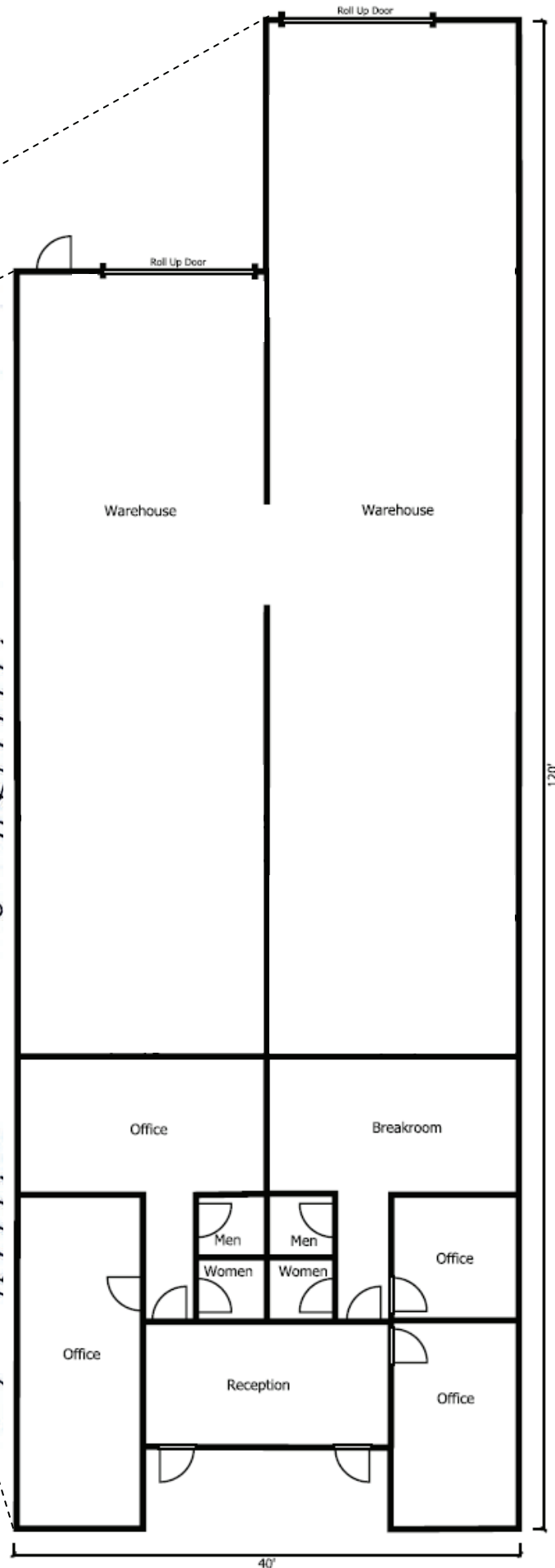
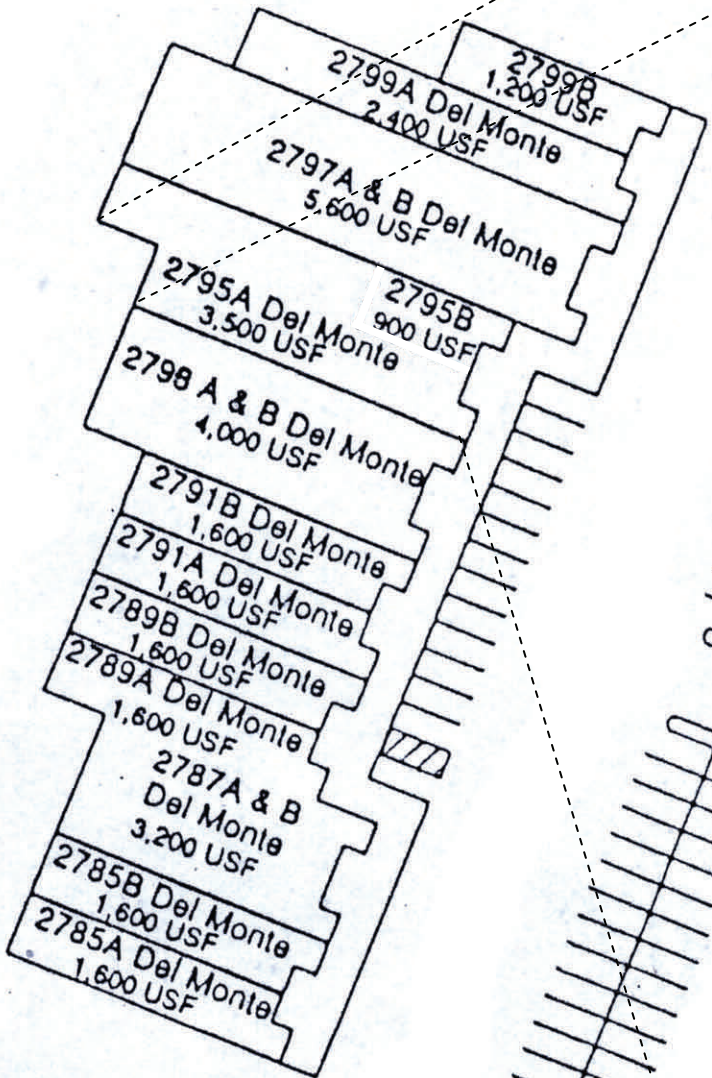
Commercial And Industrial Real Estate Since 1965

**1401 Shore Street**  
**West Sacramento, CA 95691**  
**T 916.371.9021**  
**F 916.373.0655**  
[www.macco.org](http://www.macco.org)



maclaughlin and co

2785-2799 Del Monte St., West Sacramento, CA



40'

120'