

AVAILABLE FOR LEASE

1700 TRIBUTE ROAD

SACRAMENTO, CA



**FULL 5% COMMISSION
TO PROCURING BROKER**

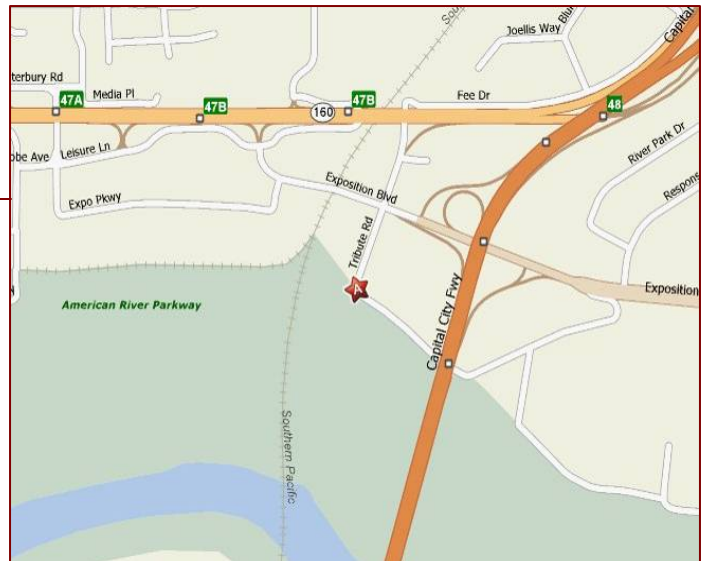
SF Available: +/-32,837 Sq. Ft.

Divisible To: +/-1,845 Sq. Ft.

Lease Rate: \$1.50/Full Service

Project Features:

- Available NOW
- \$15 PSF Tenant Improvement Allowance
- Monument Signage Available
- Parking Ratio: 4/1,000
- +/-6,607 SF Existing Call Center (Can Expand)
- Great Point West Location Off Capitol City Freeway and Exposition Blvd.
- Close Proximity to Restaurants And Retail Centers



For Information Contact:

Tom MacLaughlin

DRE Lic. No. 00690406

Debbie Regan

DRE Lic. No. 01703752

1401 Shore St., W. Sacramento, CA 95691
Phone: 916.371.9021 Fax: 916.373.0655



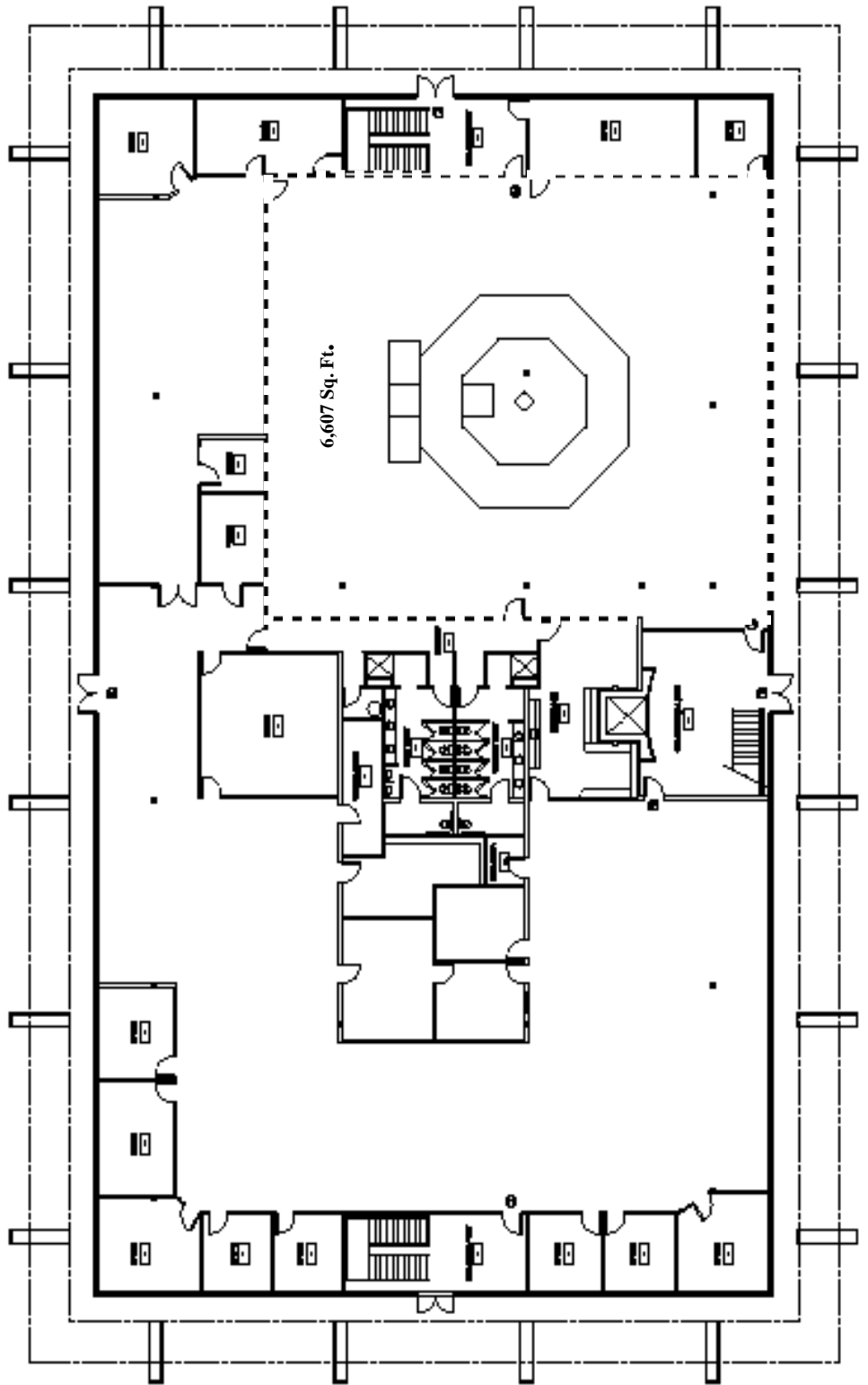
macLaughlin and co

Commercial and Industrial Real Estate Since 1965

The information contained herein has been carefully checked and to the best of our knowledge is correct but we assume no liability for representations as to values or for errors or omissions in this statement. Client should carefully verify the above items before making any investment decisions.

Existing Floor Plan

1st Floor

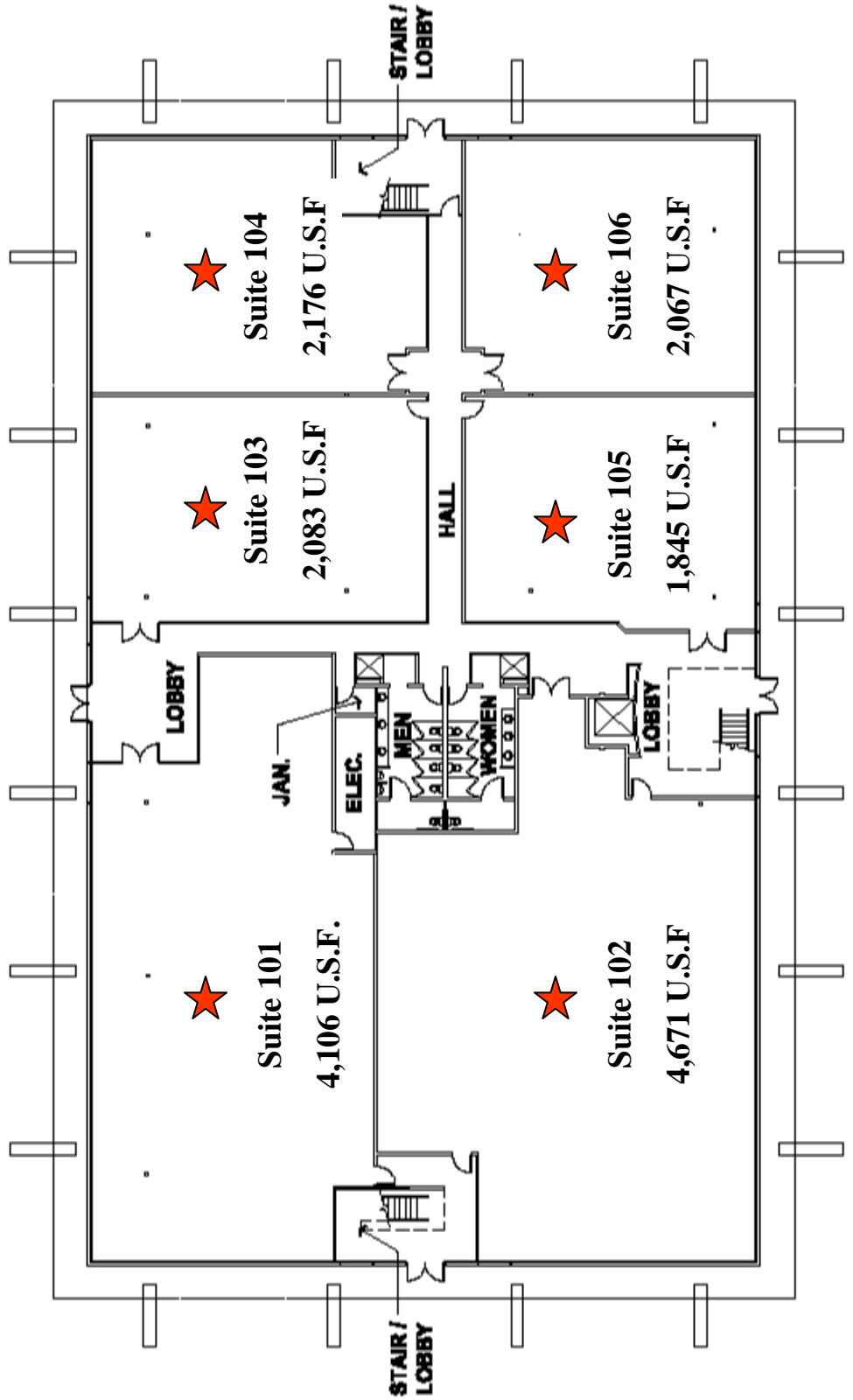


macLaughlin and co

Commercial and Industrial Real Estate Since 1965


Proposed Floor Plan

1st Floor



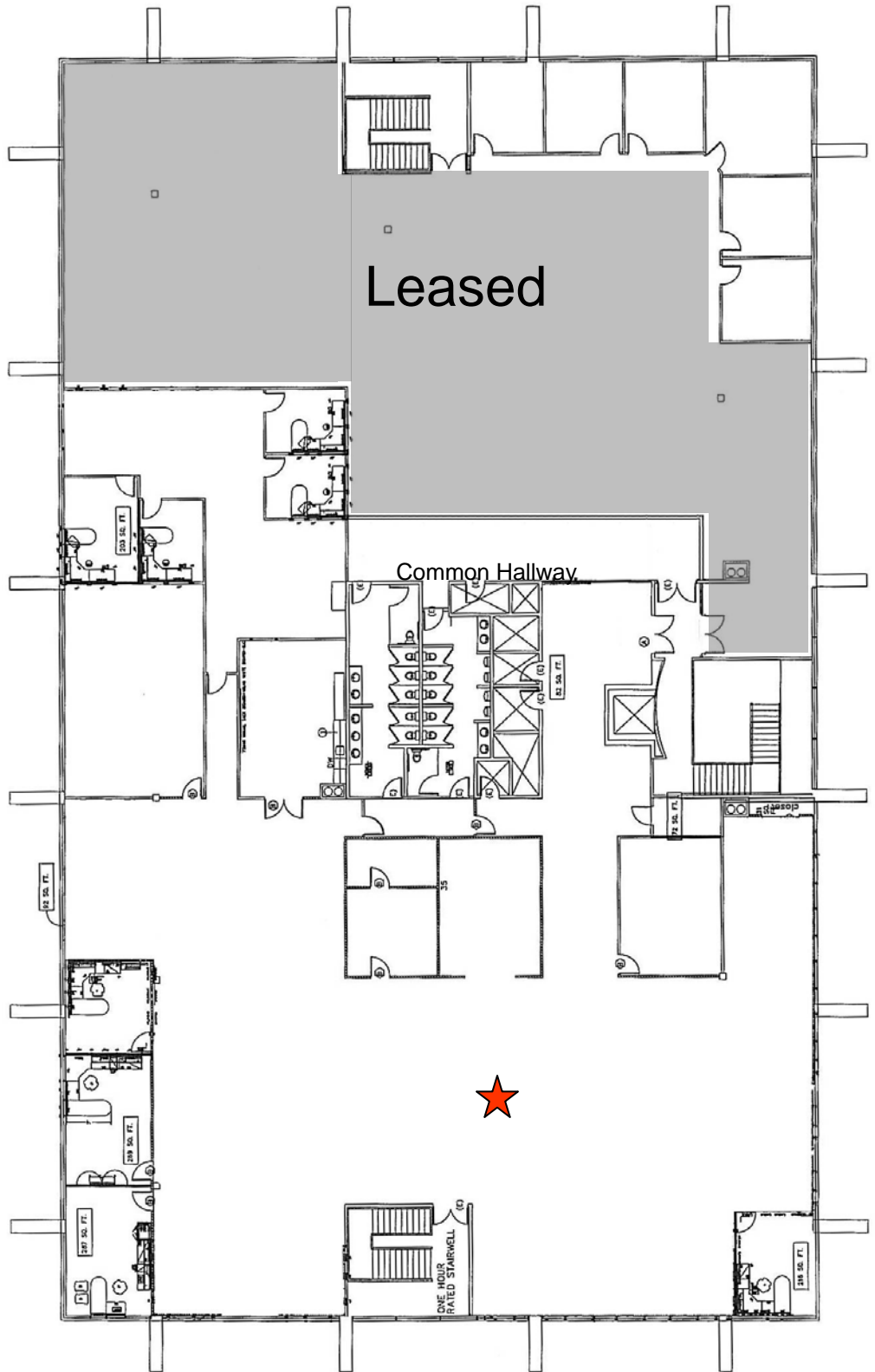
macLaughlin and co

Commercial and Industrial Real Estate Since 1965

 Available Space


Existing Floor Plan

2nd Floor



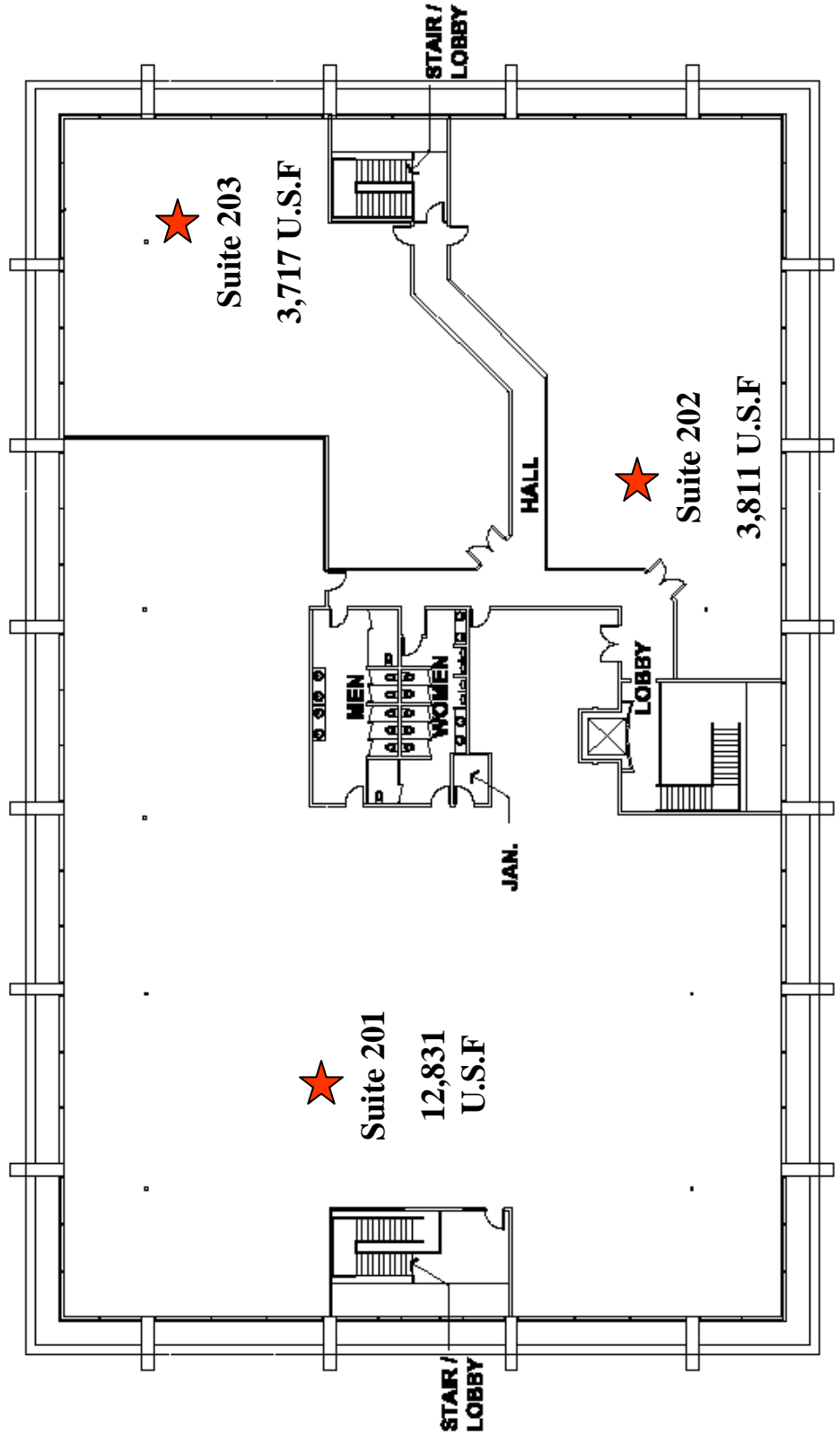
macLaughlin and co

Commercial and Industrial Real Estate Since 1965

 Available Space


Proposed Floor Plan

2nd Floor



macLaughlin and co

Commercial and Industrial Real Estate Since 1965

 Available Space