



**mac**laughlin and **co**

# Industrial Space For Lease

1140 Tara Court (Suite B), Rocklin, CA

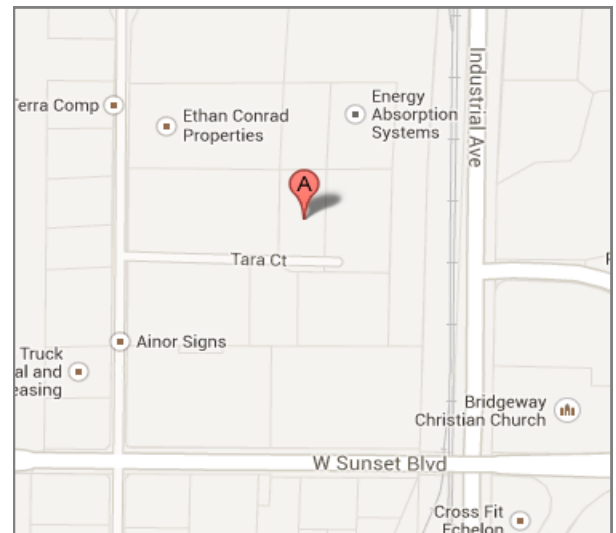


**6,000 Sq. Ft. Available**  
**701 Sq. Ft. Office**

**Asking Rent: \$0.45/NNN**

**We are pleased to offer the following space:**

- ⇒ Great Rocklin location, right off Hwy 65
- ⇒ 701 Sq. Ft. Office
- ⇒ 22' Clear Height
- ⇒ Fully Sprinklered
- ⇒ 1 Dock Door
- ⇒ Power: 120/208 Volt 3-Phase



**Tom MacLaughlin** 916.374.4233 [thmac@macco.org](mailto:thmac@macco.org) Lic #00690406

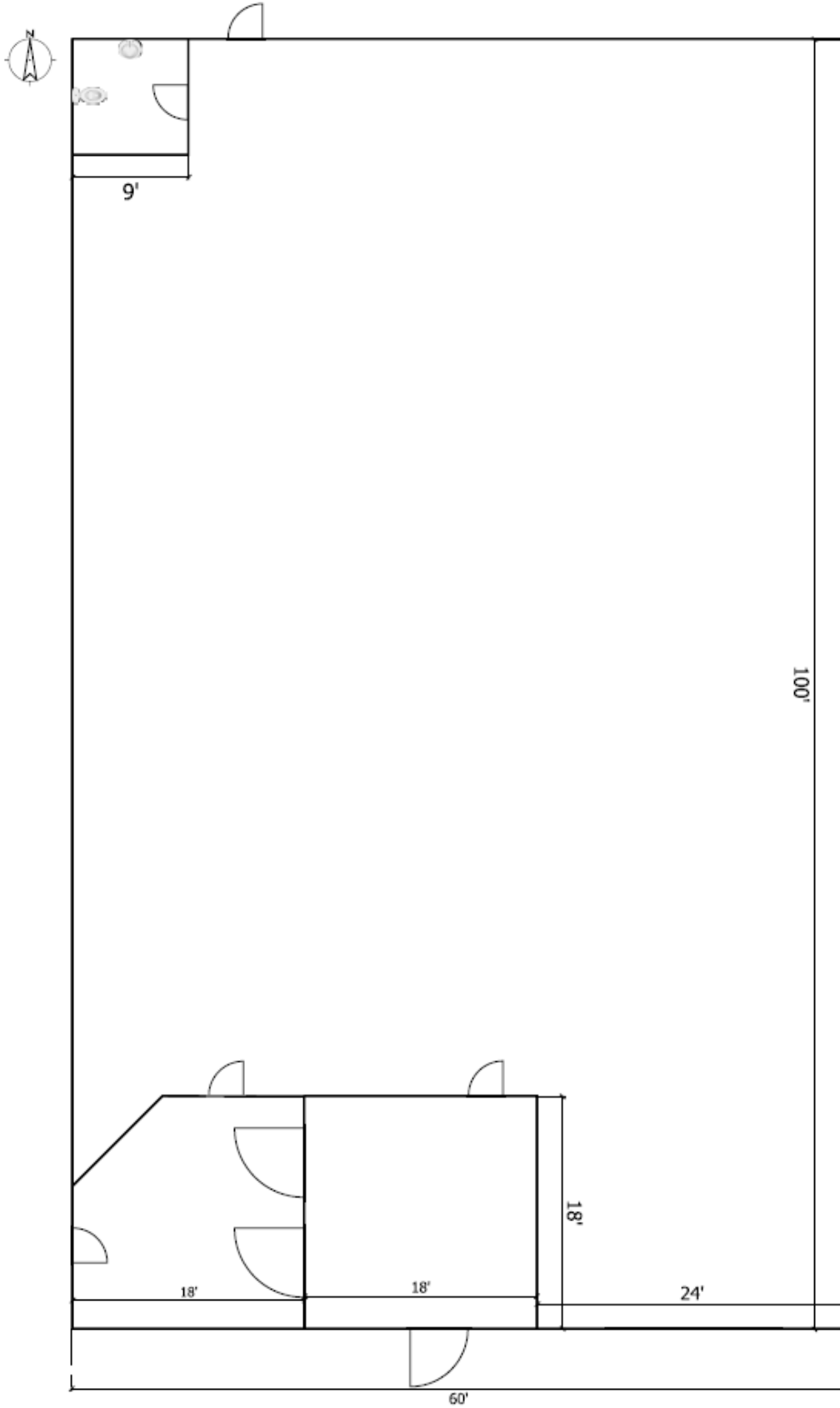
**Debbie Regan** 916.374.4225 [dregan@macco.org](mailto:dregan@macco.org) Lic #01703752

1401 Shore Street, West Sacramento, CA 95691 T 916.371.9021

[www.macco.org](http://www.macco.org)

The information contained herein has been carefully checked and to the best of our knowledge is correct but we assume no liability for representations as to values or for errors or omissions in this statement. Client should carefully verify the above items of income and expenses and all other information contained herein.

# FLOOR PLAN



## Aerial Photo

